

MONTEREY COUNTY

DAILY SITUATION

REPORT



Active Event or Incident(s):

2020 Novel Coronavirus (COVID-19)

Date:

8/7/2020 10:33 AM

View Report:

[Website](#) (en español)

Charles McKee

*County Administrator
Emergency Operations Center
Director*

Gerry Malais

*Emergency Services Manager
Emergency Operations Center
Manager*

Dr. Edward Moreno

*Health Officer
Health Department*

Karen Smith

*Public Information Officer
Health Department*

SITUATION SUMMARY (LOCAL COVID DATA)

Novel Coronavirus is an outbreak of respiratory disease caused by a novel (new) coronavirus that was first detected in China and which has now been detected in more than 100 locations internationally, including in the United States. The virus has been named “SARS-CoV-2” and the disease it causes has been named “coronavirus disease 2019” (abbreviated “COVID-19”).

All data is developed by the Health Department. For questions, comments, and concerns, call 831.769-8700 or 831.755.4521 or email covid-19@co.monterey.ca.us.

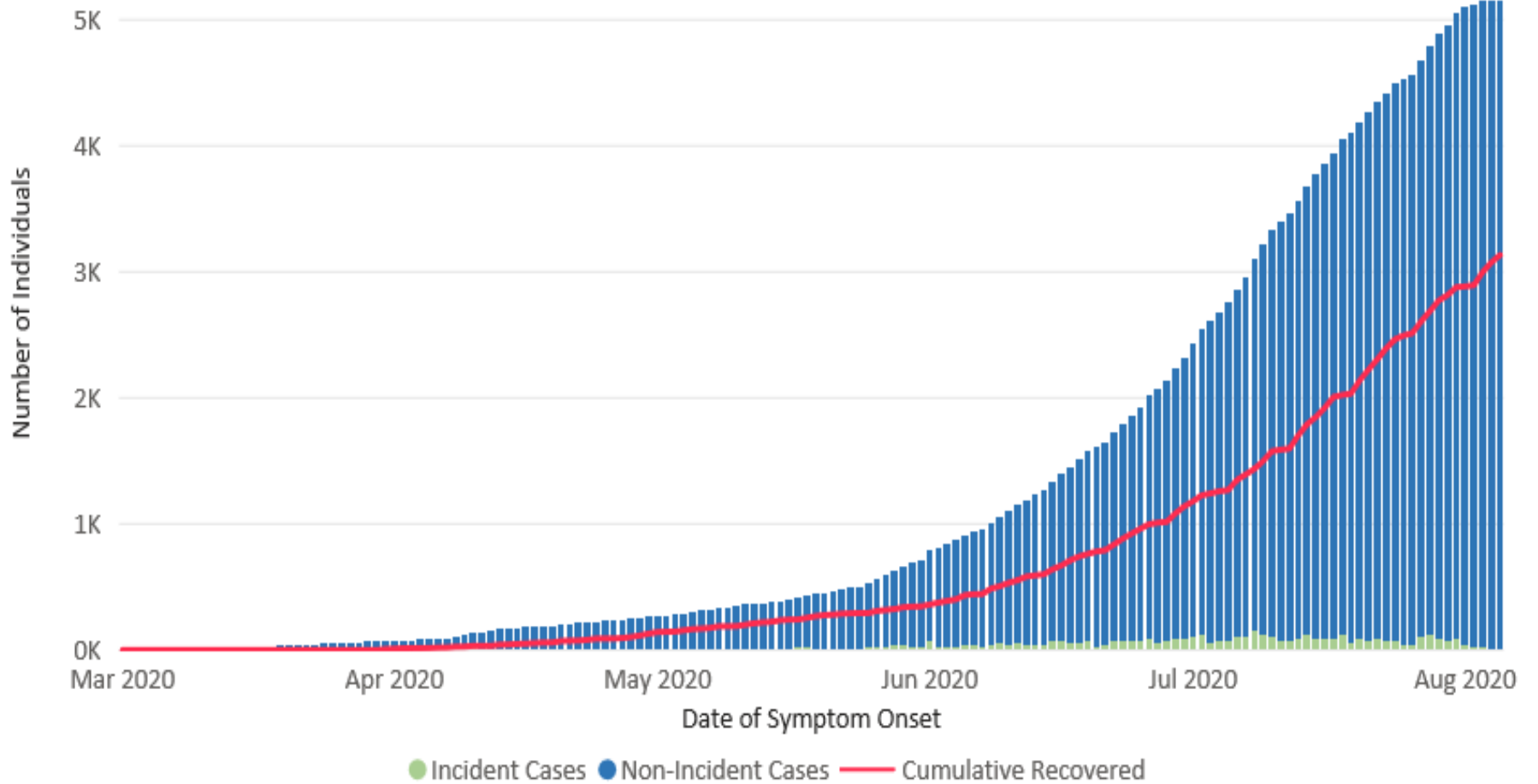
Note: Due to an issue with the statewide surveillance system, some electronic laboratory reports resulted during the last few weeks may not have been received and processed by the Monterey County Health Department. Therefore, the data below likely represent an undercount of local cases. Local data will continue to be published while the issue is being addressed by the California Department of Public Health. However, data should be interpreted with caution.

5,156 Confirmed Cases ↑36 Change	321 Hospitalizations (Cumulative) ↑7 Change	35 Fatalities 0 Change	3,207 Recovered ↑89 Change	12,760 Contacts ↑236 Change
--	--	--	--	---

Race and Ethnicity	Number of Hospitalized Individuals (n)	Proportion of Hospitalized Cases (%)	Number of Fatalities (n)	Proportion of Fatalities (%)	Proportion of Monterey County Population (%)
Asian & Pacific Islander, Not Hispanic	10	3%	8	25%	6%
Black or African American, Not Hispanic		2%			2%
Other, Not Hispanic	6				3%
White, Not Hispanic	31	10%			28%
Hispanic or Latino, Any Race	258	85%	25	75%	61%
Unknown (Under Investigation)	16	-	2	-	-
Total	321	100%	35	100%	100%
Age Group in Years	Number of Hospitalized Individuals (n)	Proportion of Hospitalized Cases (%)	Number of Fatalities (n)	Proportion of Fatalities (%)	Proportion of Monterey County Population (%)
0 - 17	7	2%	8	23%	25%
18 - 23	12	4%			8%
24 - 34	43	13%			17%
35 - 44	48	15%			14%
45 - 54	66	21%			11%
55 - 64	58	18%	27	77%	11%
65+	87	27%			14%
Total	321	100%	35	100%	100%

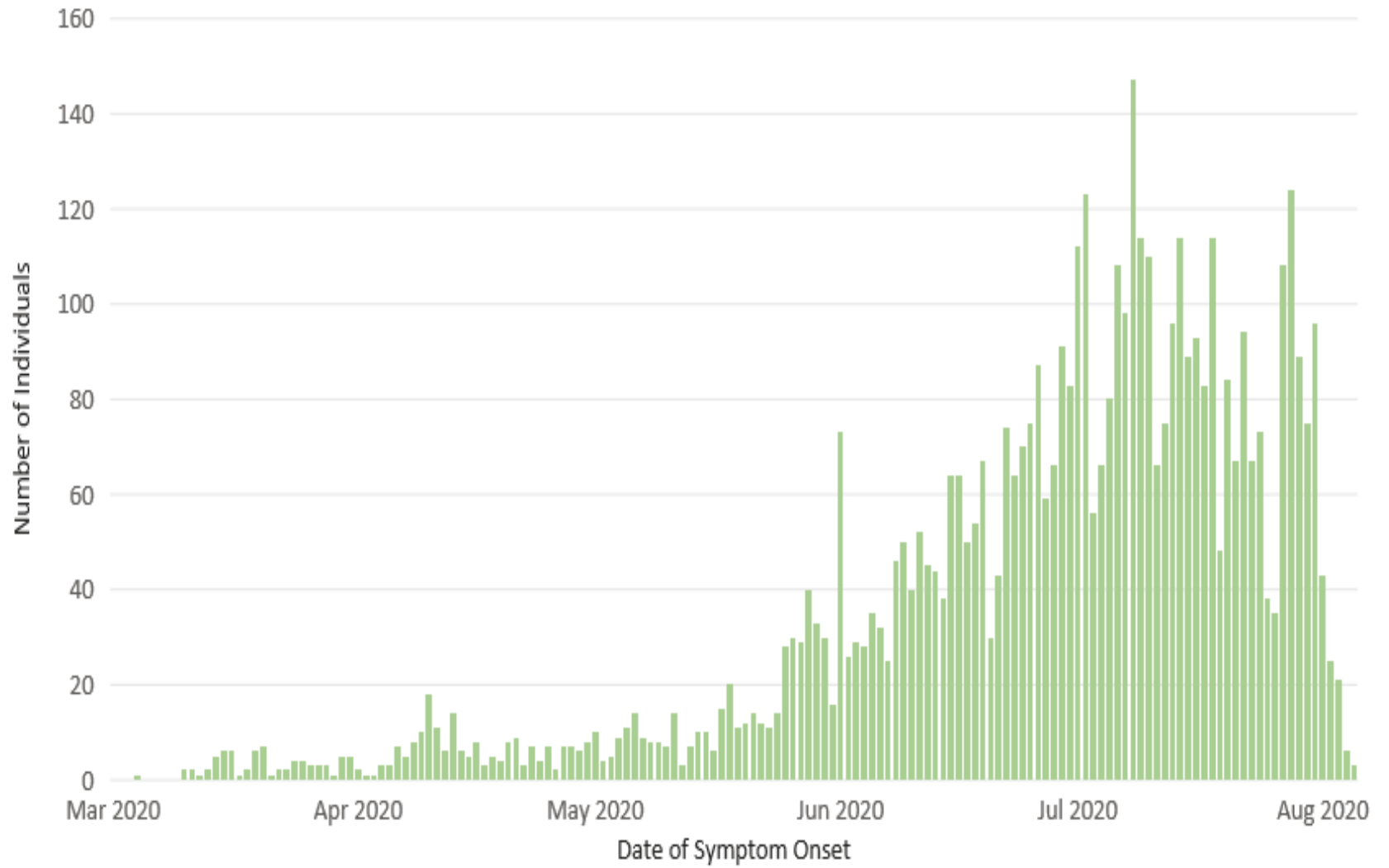
New, Previously Reported, and Recovered Cases

COVID-19 Among Monterey County Residents



New Cases by Date of Symptom Onset

COVID-19 Among Monterey County Residents

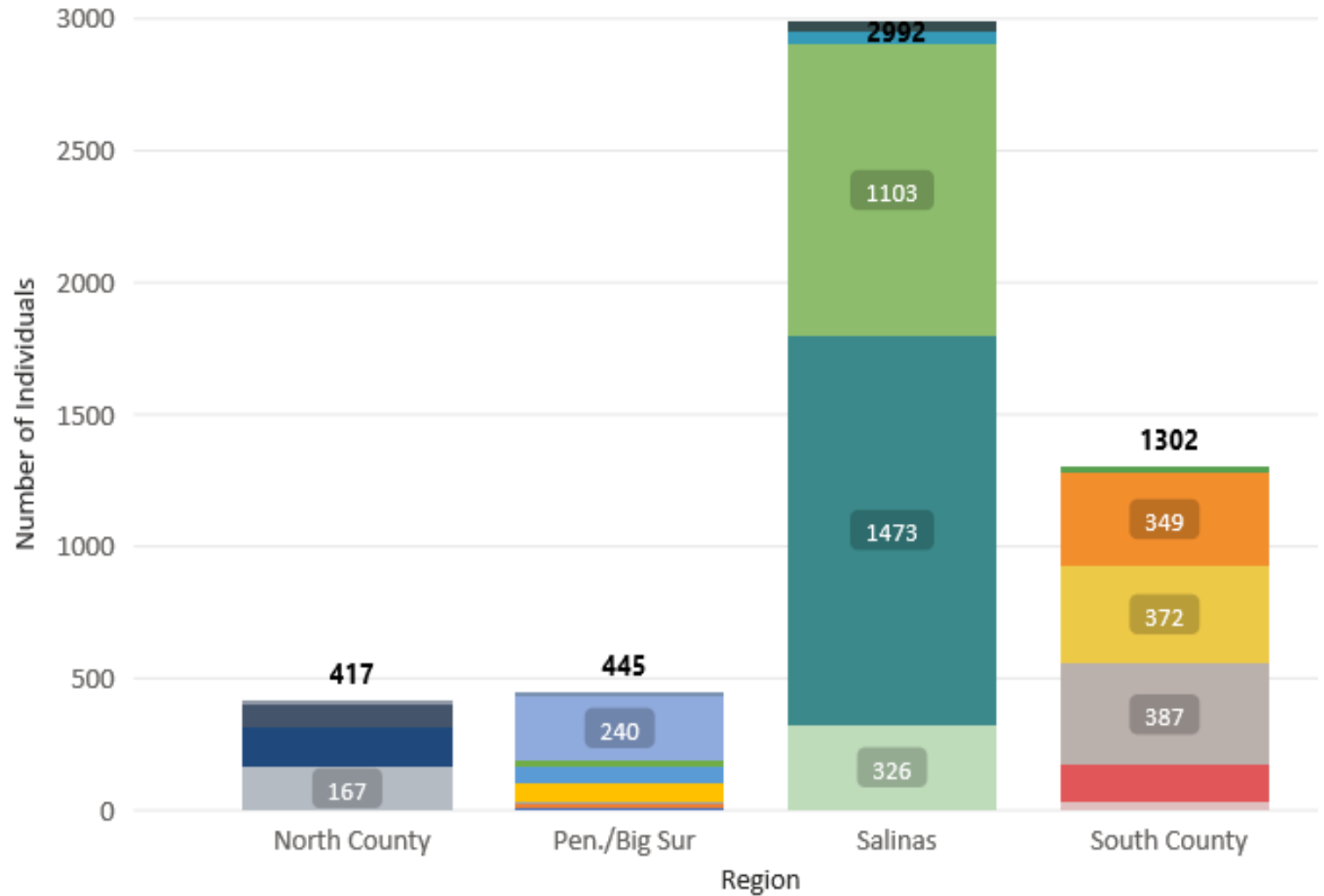


Region of Residence

COVID-19 Among Monterey County Residents: Region of Residence

Legend

- North County 93907
- North County 95012
- North County 95076
- North County Other
- Pen./Big Sur 93920
- Pen./Big Sur 93923
- Pen./Big Sur 93924
- Pen./Big Sur 93933
- Pen./Big Sur 93940
- Pen./Big Sur 93950
- Pen./Big Sur 93955
- Pen./Big Sur Other
- Salinas 93901
- Salinas 93905
- Salinas 93906



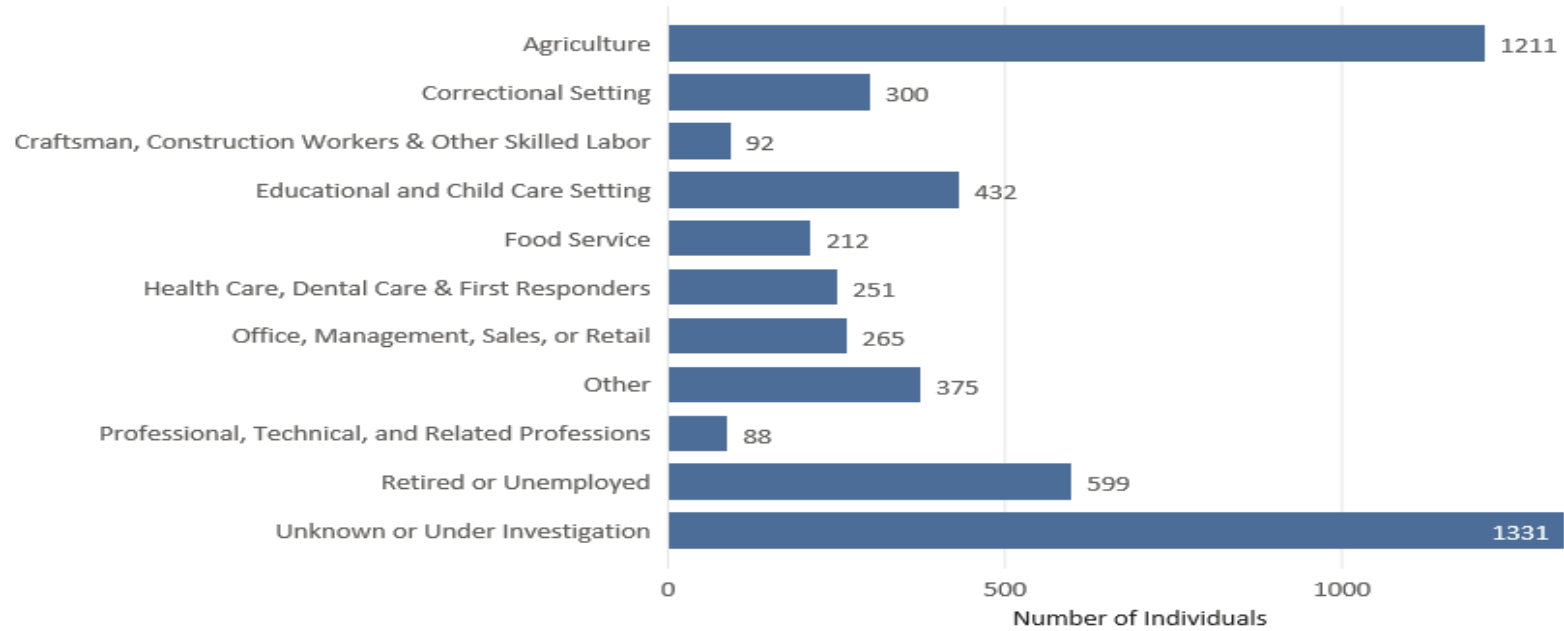
MONTEREY COUNTY OPERATIONAL AREA

DAILY SITUATION REPORT

Region	Zip Code	Incident Cases	Change	% of Total Cases	Recovered	% Cases Recovered	Change
North County	93907	167	1	3.24%	108	64.67%	1.42%
	95012	146	1	2.83%	96	65.75%	2.31%
	95076	90	-1	1.75%	52	57.78%	5.03%
	Other	14	0	0.27%	8	57.14%	0.00%
	Subtotal	417	1	8.09%	264	63.31%	2.49%
Peninsula/Big Sur	93920	5	0	0.10%	4	80.00%	0.00%
	93923	16	0	0.31%	10	62.50%	0.00%
	93924	7	0	0.14%	4	57.14%	0.00%
	93933	78	0	1.51%	57	73.08%	1.28%
	93940	63	1	1.22%	39	61.90%	2.23%
	93950	23	0	0.45%	16	69.57%	0.00%
	93955	240	3	4.65%	167	69.58%	-0.04%
	Other	13	0	0.25%	11	84.62%	0.00%
	Subtotal	445	4	8.63%	308	69.21%	0.51%
Salinas	93901	326	3	6.32%	211	64.72%	1.57%
	93905	1473	16	28.57%	971	65.92%	1.06%
	93906	1103	2	21.39%	577	52.31%	0.90%
	93908	51	2	0.99%	26	50.98%	-2.08%
	Other	39	0	0.76%	28	71.79%	0.00%
	Subtotal	2992	23	58.03%	1813	60.59%	1.01%
South County	93925	30	1	0.58%	13	43.33%	1.95%
	93926	140	1	2.72%	102	72.86%	4.51%
	93927	387	0	7.51%	251	64.86%	1.55%
	93930	372	4	7.21%	252	67.74%	1.44%
	93960	349	2	6.77%	189	54.15%	1.71%
	Other	24	0	0.47%	15	62.50%	0.00%
	Subtotal	1302	8	25.25%	822	63.13%	1.85%

Employment Industry

COVID-19 Among Monterey County Residents: Employment Industry



50,315
Total Tested

5,156
Positive Results

45,159
Negative Results

10.25%
Test Positivity Rate

2.89
Test Turnaround Time in Days

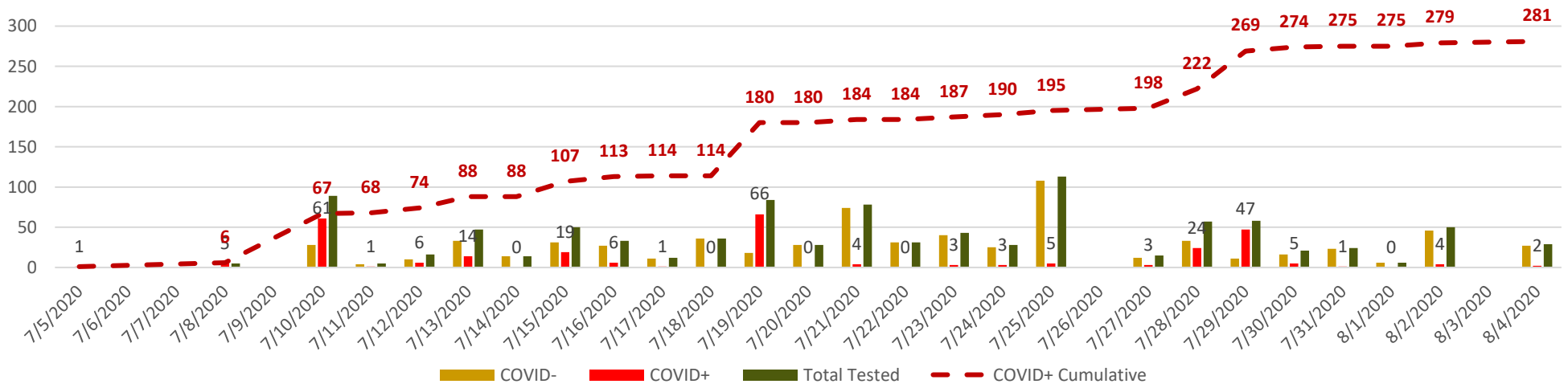
MONTEREY COUNTY SHERIFF'S OFFICE

JAIL INMATE COVID DATA

709	973	281	156	334	20	0
Total Jail Population	Inmate Population Tested	Confirmed Cases (Cumulative)	Current Cases	Inmates Released	Inmate Alternative Housing	Fatalities
↓ 4 Change	0 Change	0 Change	↓ 12 Change	↑ 39 Change	0 Change	0 Change

Total COVID+ Inmates (Cumulative) = 281

28.9% Positivity Rate



RESPONSE SUMMARY

Jurisdiction	EOC Status	Proclamation of Local Emergency	Government Services
Monterey County	Level 1 Activation; Joint Information Center Open; Health Department Operations Center Full Activation	Yes	Facility Closures
Carmel-by-the-Sea	Partial Activation	Yes	Facility Closures
Del Rey Oaks	Partial Activation	Yes	Facility Closures
Gonzales	Partial Activation	Yes	
Greenfield	Partial Activation	Yes	Possible Closures
King City	Partial Activation	Yes	Possible Closures
Marina	Partial Activation	Yes	Facility Closures
Monterey	Partial Activation	Yes	Facility Closures
Pacific Grove	Partial Activation	Yes	Partial Closures
Salinas	Partial Activation	Yes	Facility Closures
Sand City	Partial Activation	Yes	
Seaside	Partial Activation	Yes	Facility Closure
Soledad	Partial Activation	Yes	
CSUMB	Partial Activation	-	Facility Closure
Hartnell	Partial Activation	-	Facility Closure
MST	Department Operations Center Activated	-	-

CARE AND SHELTER

Care Services	Facility	Agency	Status
Respiratory Virus Screening Medical Tents	Community Hospital of Monterey Peninsula	Community Hospital of Monterey Peninsula	Open
Respiratory Virus Screening Medical Tents	Natividad Hospital	Natividad Hospital	Open
Testing Site	Agricultural Commissioner's Office (1428 Abbott St, Salinas, CA 93901)	OptumServe / California Department of Public Health	Open (By appointment)
Testing Site	Greenfield Branch of Monterey County Free Libraries (315 El Camino Real, Greenfield, CA 93927)	OptumServe / California Department of Public Health	Open (By <u>appointment</u>)
Testing Site	Planned Parenthood Mar Monte (980 Fremont Street, Monterey, CA 93940)	Planned Parenthood	Open (<u>No Appointment Required</u>)
Testing Site	Clinica de Salud – Salinas (950 Cicle Dr, Salinas.)	Clinica de Salud	
Testing Site	Clinica de Salud – Salinas (219 N Sanborn Rd, Salinas.)	Clinica de Salud	
Testing Site	Clinica de Salud – Salinas (2180 N Main St, Salinas)	Clinica de Salud	
Testing Site	Clinica de Salud – Salinas (620 E Alvin Dr # G, Salinas)	Clinica de Salud	
Testing Site	Clinica de Salud – Salinas (440 Airport Blvd, Salinas)	Clinica de Salud	
Testing Site	Clinica de Salud – Castroville (10561 Merritt Street, Castroville)	Clinica de Salud	
Testing Site	Clinica de Salud – Gonzales (126 5th Street, Gonzales)	Clinica de Salud	
Testing Site	Clinica de Salud – Greenfield (808 Oak Avenue, Greenfield)	Clinica de Salud	
Testing Site	Clinica de Salud – King City (122 San Antonio Dr, King City)	Clinica de Salud	
Testing Site	Clinica de Salud – Soldead (799 Front Street, Soledad)	Clinica de Salud	
Testing Site	Clinica de Salud – Chualar (24285 Lincoln Street, Chualar)	Clinica de Salud	
Testing Site	Ramsay Park Family Center (1301 Main Street. Watsonville, CA 95076)	Santa Cruz County	
Testing Site	Veteran's Memorial Building (Hollister)	San Benito County	

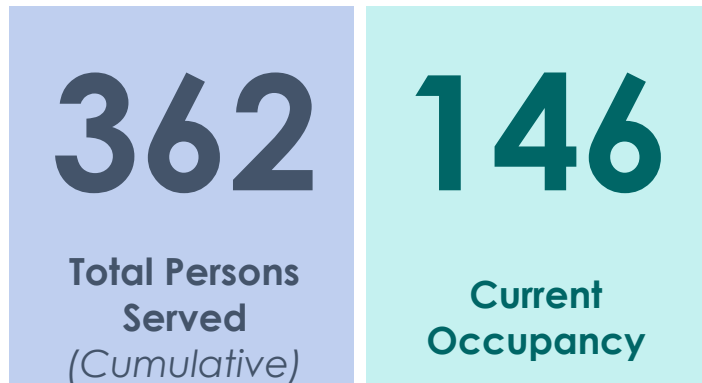
MONTEREY COUNTY OPERATIONAL AREA

DAILY SITUATION REPORT

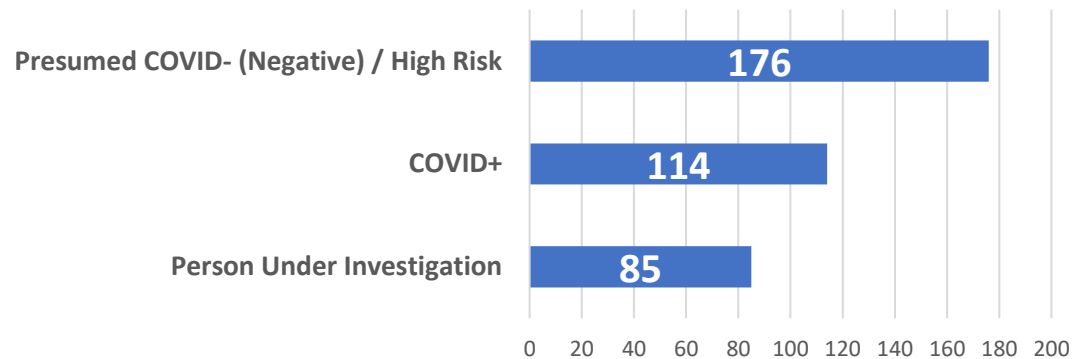
Testing Site	Major General William H. Gourley VA-DoD Outpatient Clinic (201 9th St, Marina, CA 93933)	VA	Appointment
Testing Site	Community Hospital of the Monterey Peninsula (23625 Holman Hwy, Monterey, CA 93940)		
Testing Site	CVS (Nearest location available to you)	CVS	Appointment
Testing Site	1428 Abbott St. Salinas, CA 93901	Monterey County	Make appointment online at https://lhi.care/covidtesting or by phone
Testing Site	Seaside High School (2200 Noche Buena St, Seaside, CA 93955)	Natividad Medical Center	Inactive
Alternate Housing Site	Monterey County Fairgrounds	Monterey County	Inactive
Alternate Housing Site	San Lorenzo Park	Monterey County	Open
Alternate Housing Site	Salinas Valley Fairgrounds	Monterey County	Inactive
Alternate Housing Site	Sherwood Hall	Monterey County	Standby
Alternate Care Site	Marina Municipal Airport	Monterey County	Inactive
Alternate Care Site	Asilomar Conference Center	California Department of Public Health	Inactive

ALTERNATE HOUSING CENSUS

(*Updated Mondays and Fridays)



COVID STATUS OF CUMULATIVE PERSONS SERVED



SIGNIFICANT EVENTS

*This is a timeline of International, domestic, and Local significant events related to COVID-19. All new information will be **highlighted at the top**.*

- July 13, 2020 - Governor expands the closure of indoor operations in Monterey County. ALL counties must close indoor operations in these sectors: Dine-in Restaurants (indoor); Wineries and Tasting Rooms (indoor); Movie Theater (indoor); Family Entertainment Centers (indoor); Zoos and Museums (indoor); Cardrooms (indoor); Closure of all brewpubs, breweries, bars, and pubs (indoor and outdoor). [More information.](#)
- July 8, 2020 - The State Health Officer has issued an order for Monterey County which imposes new restrictions; order requires some businesses and activities to move their activities outdoors and some businesses to close completely. [More Information.](#)
- July 2, 2020 - California Department of Public Health Officials placed Monterey County on the COVID-19 County Data Monitoring Project watch list in response to elevated disease transmission as indicated by Monterey County exceeding the state's 14-day case rate threshold of 100 cases per 100,00 residents and by exceeding the state's threshold for percent change in 3-day average COVID-19 hospitalizations. [More Information.](#)
- June 12, 2020 - Charter Boat operators may begin. [More information.](#)
- June 12, 2020 - Opening of the business sectors. [More Information.](#)
- June 11, 2020 - Monterey County Health Officer Rescinds Short-Term Lodging Order. [More Information](#)
- June 11, 2020- Monterey County Health Officer Rescinds Short-Term Lodging Order. [More Information](#)
- May 30, 2020- Monterey County Attestation Approved. [More Information.](#)
- May 26, 2020 – Health Department Submits Attestation. [More information.](#)
- May 25, 2020 - California Department of Public Health announced the statewide reopening of places of worship for religious services.
- May 1, 2020 The Monterey County Health officer amends and extends Shelter-in Place Order. [More Information](#)
- April 28, 2020-Monterey County Health Officer issues mandatory face covering. [More Information.](#)
- April 14, 2020 – Monterey County Op Area EOC Announces Alternate Care and Alternate Housing Sites. [More Information.](#)
- April 6, 2020 – Monterey County Op Area EOC elevated activation level to [Level 1](#).
- April 5, 2020 – 2 new COVID-19 Testing Sites open. [More info.](#)
- April 3, 2020 – Monterey County Health Officer Reissues the Shelter in Place Order with added restrictions. [More Information.](#)
- April 1, 2020 - California Department of Public Health releases Face Coverings Guidance. [More Information.](#)

MONTEREY COUNTY OPERATIONAL AREA

DAILY SITUATION REPORT

- March 26, 2020 – Disaster Cost Recovery Information Released. Event Number: FEMA-3428-EM-CA California COVID-19. [More Information.](#)
- March 21, 2020 – First fatality due to complications from COVID-19 in Monterey County.
- March 19, 2020 - Governor Newsom issues a Shelter In Place Order to protect the health and well-being of all Californians and to establish consistency across the state in order to slow the spread of COVID-19.
- March 18, 2020 – Monterey County Op Area EOC elevated activation level to Level 2.
- March 18, 2020 - Monterey County Jail Visitation Suspended
- March 17, 2020 – City of Salinas and Sand City proclaim the existence of a local emergency.
- March 17, 2020 – The County of Monterey Health Officer has issued a [Shelter-in-Place Order](#) effective at 12:01 a.m. on March 18, 2020 and will continue to be in effect until 11:59 p.m. on April 7, 2020, or until it is extended, rescinded, superseded, or amended in writing by the Health Officer.
- [March 17, 2020 – First two confirmed cases of COVID-19 in Monterey County.](#)
- March 17, 2020 –The Counties of Marin, Contra Costa, Alameda, Santa Clara, San Mateo, Santa Cruz and San Francisco order a Shelter In Place beginning March 17, 2020.
- March 16, 2020 – Cities of Del Rey Oaks, Gonzales, Greenfield, King City, and Soledad declared local emergencies.
- March 16, 2020 – Monterey County schools & libraries temporarily closed.
- March 13, 2020 –Diamond Princess Cruise Ship passengers quarantined in Asilomar Hotel, Pacific Grove while undergoing testing.
- March 13, 2020 – Cities of Seaside, Marina, Monterey, Carmel & Pacific Grove proclaim emergencies.
- March 13, 2020 – [President Declares a National Emergency.](#)
- March 12, 2020 – [Governor Newsom issue Executive Order EO-N-25-20 .](#)
- March 11, 2020 – [World Health Organization declares pandemic for COVID-19.](#)
- March 6, 2020 – Monterey County Public Health begins testing for COVID-19.
- March 6, 2020 – [Monterey County Proclaims Emergency \(Approved by Board of Supervisors March 10, 2020 \).](#)
- March 4, 2020 – [California Proclaims Emergency.](#)
- March 4, 2020 – First COVID-19 death in California.
- March 3, 2020 – CSUMB/ Monterey Peninsula Regional Emergency Operations Center activated to lowest level.

- March 3, 2020 – Monterey County’s Health Department Operations Center (DOC) Activated.
- March 2, 2020 – Monterey County Emergency Operations Center (EOC) Activated to Level 3 (lowest).
- February 28, 2020 – First case of community spread in California.
- February 4, 2020 – [USA declares public health emergency; travel restrictions put in place.](#)
- January 30, 2020 – World Health Organization (WHO) declares public health emergency of international concern.
- Jan 26, 2020 – First confirmed case in California.
- January 21, 2020 – First confirmed US case in Washington State.
- December 31, 2019 – First confirmed case of COVID-19 in Wuhan, China.

STATUS OF SHELTER-IN-PLACE



Effective immediately, the Governor expands the closure of indoor operations in counties that have been on the monitoring list for three consecutive days, this includes Monterey County.. Within those sectors, those that are not able to continue their business through **outdoor operations** must close that portion of their business effective immediately in order to further mitigate the spread of the virus. This applies to the following sectors:

- Gyms and Fitness Centers
- Places of Worship
- Indoor Protests
- Offices for Non-Critical Infrastructure Sectors as identified at covid19.ca.gov
- Personal Care Services(including nail salons, massage parlors, and tattoo parlors)
- Hair Salons and Barbershops
- Malls

Additionally, the Governor has expanded the closure of the indoor business operations listed below statewide. ALL counties must close indoor operations in these sectors:

- Dine-in Restaurants (indoor)
 - Wineries and Tasting Rooms (indoor)
 - Movie Theater (indoor)
 - Family Entertainment Centers (indoor)
 - Zoos and Museums (indoor)
 - Cardrooms (indoor)
- Closure of all business operations both indoor and outdoor
- Brewpubs, breweries, bars, and pubs (indoor and outdoor).

Outdoor operations may be conducted under a tent, canopy, or other sun shelter but only as long as there is only one wall and there is sufficient outdoor air movement.

These actions remain in effect until further notice.

The updated guidance can be found at <https://covid19.ca.gov/>.

MONITORING METRICS (MORE INFO)

Indicator or Metric*	Baseline at Variance Application Submission	Threshold for Considering Modifications	Current Status**	
Ability to Test, Contact Trace, Isolate, and Support the Exposed				
14-Day cumulative COVID-19 incidence per 100,000 population	28.6	≥32	296.1***	
Percent of cases reached by public health teams	98.5%	<90%	97.2%	
Percent of Alternative Housing Site Beds designated for individuals diagnosed with COVID-19 or who are awaiting test results that are filled	2%	≥25%	14%	
Ability to Protect Those at High Risk for COVID-19				
Percent of Skilled Nursing Facilities with no new cases in the last 14 days	94%	<75%	50%	
Number of COVID-19 related deaths over last 14 days	2	≥5	10	
Surge Capacity for Hospitals and Health Care System				
7-Day average of daily percent change in total number of hospitalized COVID-19 patients	-0.2%	≥5%	4%	
Percent of ICU beds available averaged over the last 14 days	71%	<54%	49%	
Percent of Monterey County hospitals with ≥14 days' supply of personal protective equipment (PPE)	100%	<75%	****	
Epidemiology and General Surveillance				
Overall test positivity rate for the past 7 days	2.3%	≥8%	18.6% ***	
Case doubling time (7 day lag)	29 days	<8 days	51 days	

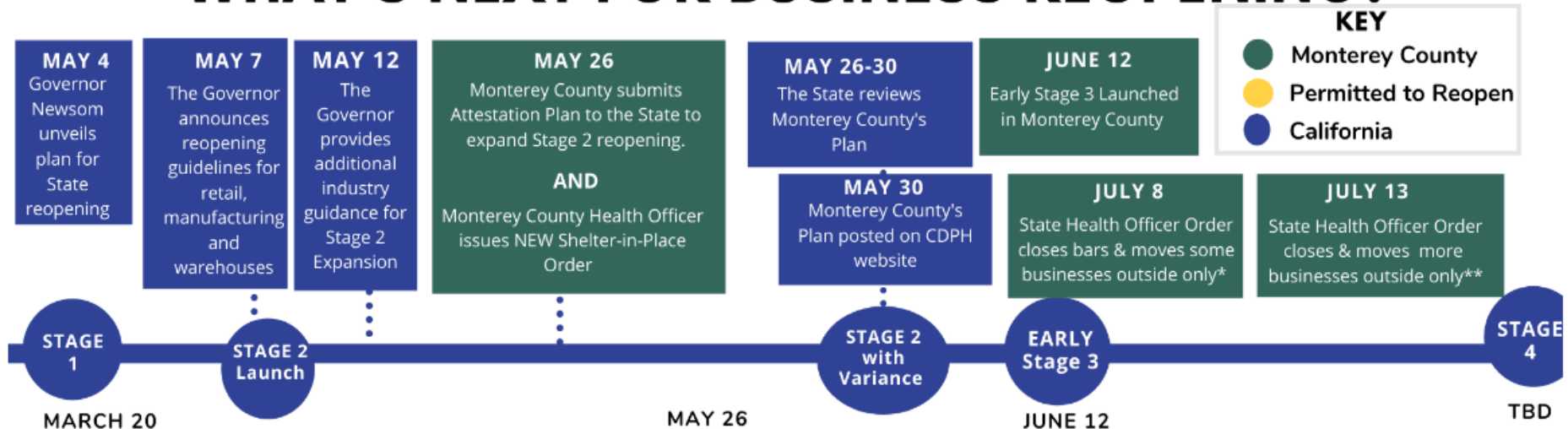
*Unless otherwise specified, all indicators and metrics are calculated using a one-day lag. Counting for measuring the metric starts on "Current Status" date.

**Current status as of August 5, 2020.

***Due to an issue with the statewide surveillance system, some electronic laboratory reports resulted during the last few weeks may not have been received and processed by the Monterey County Health Department. Therefore, the data below likely represent an under-count of local cases. Local data will continue to be published while the issue is being addressed by the California Department of Public Health. However, data should be interpreted with caution.

****The California Hospital Association and California Department of Public Health are no longer reporting greater than or equal to 14 days' supply of personal protective equipment (PPE) by hospital.

WHAT'S NEXT FOR BUSINESS REOPENING?



Stage 1
Stay-at-Home Order in Effect, Essential Businesses Only

- Businesses listed by the Health Order or
- Allowable Services List

Stage 2 Lower Risk Workplaces Reopen with Safety Modifications
Early STAGE 2 launched Statewide

- Manufacturing and Logistics
- Construction
- Landscape / gardening
- Childcare/ day camps
- Golfing and golf courses
- Schools with modifications
- Full service car washes
- In-person religious services Outdoor only**
- Outdoor museums
- Public spaces
- Auto dealerships
- Dog grooming / dog walking services
- On-site retail
- shopping malls / swap meets Outdoor only**
- Residential cleaning and janitorial
- Office work spaces
- Real estate transactions
- Film, TV, and music production
- Pro Sports without live audience
- Curbside library services

STAGE 2 with Variance

- Outdoor only restaurants*
- Hair salons and barbershops Outdoor only**
- Casinos

Early Stage 3 with Variance
Higher Risk Workplaces Reopen with Safety Modifications

Early STAGE 3

- Movie theaters - Drive in only*
- Family entertainment centers Outdoor only*
- Winery tasting rooms Outdoor only*
- Zoos and museums Outdoor exhibits only*
- Gyms and fitness centers Outdoor only**
- Hotels/Lodging for tourism
- Cardrooms/racetracks Outdoor only*

Additional Services on June 19

- Campgrounds and outdoor recreation / pools
- Nail salons/tattoo parlors/body waxing/spas/Massage Outdoor only**

STAGE 3 NOT PERMITTED TO OPEN

- Bars*
- Indoor and outdoor playgrounds
- Live theater / in-person higher education
- Saunas/steam rooms/hot tubs

Stage 4 Stay-at-Home Order Ends, Large Gatherings

- Concerts / Festivals
- Convention Centers
- Live audience sports
- Nightclubs / theme parks



For COVID-19 Information:
 (831) 755-4521 or (831) 769-8700 or covid-19@co.monterey.ca.us
 or www.mtyhd.org/covid19
 Industry Guidance: [www. https://covid19.ca.gov/industry-guidance/](https://covid19.ca.gov/industry-guidance/)

Updated 07/14/2020
 Adapted from Humboldt County

STATUS OF THE STATE

Californians have been staying home and saving lives since the start of our statewide stay-at-home order issued on March 19, 2020. These efforts have allowed the state to move forward on our roadmap for modifying the statewide order.

We are now in early Stage 2, where retail (curbside and delivery only), related logistics and manufacturing and essential businesses can open. The state is issuing guidance to help these workplaces reopen safely. [More Information.](#)

Stage 2 expansion will be phased in gradually. Some communities may move through Stage 2 faster if they are able to show greater progress. Counties that have met the readiness criteria and worked with the California Department

of Public Health can open more workplaces as outlined on the [County Variance page.](#)

California moved into Stage 2 of modifying the state’s Stay-at-Home order on May 8, 2020. Our progress in achieving key public health metrics will allow a gradual re-opening of California’s economy.

We recognize the impact of economic hardship. We must get our economy roaring once again and put paychecks in people’s pockets. But the risk of COVID-19 infection is still real for all Californians and continues to be fatal.

The state is issuing guidance for businesses to follow, if they’re permitted to open per County Public Health rules.



JOINT INFORMATION CENTER (JIC)

Community Resources

- A directory of resources available to Monterey County communities can be found on the COVID-19 Care for Community [webpage](#).
- Frequently Asked Questions can be found [here](#).

COVID-19 Updates

- To receive updates regarding COVID-19 in Monterey County, text **MCCOVID19** to **888777**.
- To receive updates regarding COVID-19 in general, text **Coronavirus** to **211211**.
- To receive text messages when a press release is posted or a press conference is identified, text **“MCMEDIA”** to **888777**.

Hotlines

- California Volunteer Corps Hotline: 833-544-2374. This hotline is specifically for older adults who have questions about resources and in need of assistance (such as medication and grocery delivery).
- Health Department Hotline (Monday-Friday, 8am-5pm). Call: 769-8700 or 755-4521
- Natividad Coronavirus Hotline is (831) 772-7365. Natividad nurses are available to speak with you in English or Spanish from 7:00 am to 11:00 pm, seven days a week.
- Montage Health Virtual Care Option Free for all community members experiencing mild respiratory symptoms including coronavirus/COVID-19. [Schedule an Appointment](#) / [More information](#).
- Salinas Valley Memorial Healthcare System has a Coronavirus Hotline: 831-755-0793 The hotline is staffed with registered nurses and will be available from 7:00am to 11:00pm, 7 days a week.
- COVID-19 Economic Assistance Hotline (Monday-Friday, 8am-4pm). Call: 831- 796-1909
- General Information call 2-1-1 or visit the [Health Department Webpage](#).

JOINT INFORMATION CENTER (JIC)

Press Conferences

- None.
- Standing Media Briefing: Monday and Friday @ 12:00 with credentialed press and available county staff, hosted by the JIC. [[Live Stream](#)]

Websites

- [Alternate Care and Housing Sites](#)
- [COVID-19 Donations and Volunteers](#)
- [FEMA Disaster Cost Recovery](#)
- [Economic Assistance Webpage](#)
- [Monterey County Health Department](#)
- [California Department of Public Health](#)
- [Center for Disease Control](#)
- [World Health Organization](#)
- [Economic Assistance for Impacted Workers](#)